

32 to 60 Wide Certified 170 mph Carport Prices in Florida *Prices subject to change without notice
 Prices on this page are 8' sides carport roof. To close sides, make taller or turn into a metal building refer to 2nd page.

PRICE INCLUDES:

- Vertical or Lap Siding Panels
- 1 Year Workmanship Warranty (Limited)
- 20 Year Warranty (See web for more info)
- 26 Gauge Roofing
- Cement Anchors
- Mobile Home Anchors (Ground)
- Welded Truss
- Braces On Every Leg
- 14 Gauge
- 4' Centers

PRICES
FOR
TOP ONLY



PLEASE NOTE:

- Customer must provide **TELESCOPIC FORK LIFT** during installation and must be able to reach 10' beyond building
- Site inspection required before installation.
- Colored screws available
- Upgrade Available 180mph 12ga

Certified 170mph
32' to 40' Wide / 8' to 20' Tall

32 x 20 \$6,095	34 x 20 \$6,395	36 x 20 \$6,795	38 x 20 \$7,195	40 x 20 \$7,695
32 x 24 \$7,145	34 x 24 \$7,495	36 x 24 \$7,895	38 x 24 \$8,295	40 x 24 \$8,795
32 x 28 \$8,195	34 x 28 \$8,595	36 x 28 \$8,995	38 x 28 \$9,395	40 x 28 \$9,895
32 x 32 \$9,245	34 x 32 \$9,695	36 x 32 \$10,095	38 x 32 \$10,495	40 x 32 \$10,995
32 x 36 \$10,295	34 x 36 \$10,795	36 x 36 \$11,195	38 x 36 \$11,595	40 x 36 \$12,095
32 x 40 \$11,345	34 x 40 \$11,895	36 x 40 \$12,295	38 x 40 \$12,695	40 x 40 \$13,195
32 x 44 \$12,395	34 x 44 \$12,995	36 x 44 \$13,395	38 x 44 \$13,795	40 x 44 \$14,295
32 x 48 \$13,445	34 x 48 \$14,095	36 x 48 \$14,496	38 x 48 \$14,895	40 x 48 \$15,395
32 x 52 \$14,495	34 x 52 \$15,195	36 x 52 \$15,595	38 x 52 \$15,995	40 x 52 \$16,495

Certified 170mph
42' to 50' Wide / 8' to 20' Tall

42 x 20 \$7,995	44 x 20 \$8,395	46 x 20 \$8,895	48 x 20 \$9,395	50 x 20 \$9,995
42 x 24 \$9,095	44 x 24 \$9,495	46 x 24 \$9,995	48 x 24 \$10,545	50 x 24 \$11,145
42 x 28 \$10,195	44 x 28 \$10,595	46 x 28 \$11,095	48 x 28 \$11,695	50 x 28 \$12,295
42 x 32 \$11,295	44 x 32 \$11,695	46 x 32 \$12,195	48 x 32 \$12,845	50 x 32 \$13,445
42 x 36 \$12,395	44 x 36 \$12,795	46 x 36 \$13,295	48 x 36 \$13,995	50 x 36 \$14,595
42 x 40 \$13,495	44 x 40 \$13,895	46 x 40 \$14,395	48 x 40 \$15,145	50 x 40 \$15,745
42 x 44 \$14,595	44 x 44 \$14,995	46 x 44 \$15,495	48 x 44 \$16,295	50 x 44 \$16,895
42 x 48 \$15,695	44 x 48 \$16,095	46 x 48 \$16,595	48 x 48 \$17,445	50 x 48 \$18,045
42 x 52 \$16,795	44 x 52 \$17,195	46 x 52 \$17,695	48 x 52 \$18,595	50 x 52 \$19,195

Certified 170mph
52' to 60' Wide / 8' to 20' Tall

52 x 20 \$10,395	54 x 20 \$11,095	56 x 20 \$11,695	58 x 20 \$12,295	60 x 20 \$12,895
52 x 24 \$11,545	54 x 24 \$12,245	56 x 24 \$12,845	58 x 24 \$13,445	60 x 24 \$14,045
52 x 28 \$12,695	54 x 28 \$13,395	56 x 28 \$13,995	58 x 28 \$14,595	60 x 28 \$15,195
52 x 32 \$13,845	54 x 32 \$14,545	56 x 32 \$15,145	58 x 32 \$15,745	60 x 32 \$16,345
52 x 36 \$14,995	54 x 36 \$15,695	56 x 36 \$16,295	58 x 36 \$16,895	60 x 36 \$17,495
52 x 40 \$16,145	54 x 40 \$16,845	56 x 40 \$17,445	58 x 40 \$18,045	60 x 40 \$18,645
52 x 44 \$17,295	54 x 44 \$17,995	56 x 44 \$18,595	58 x 44 \$19,195	60 x 44 \$19,795
52 x 48 \$18,445	54 x 48 \$19,145	56 x 48 \$19,745	58 x 48 \$20,345	60 x 48 \$20,945
52 x 52 \$19,595	54 x 52 \$20,295	56 x 52 \$20,895	58 x 52 \$21,495	60 x 52 \$22,095

PLEASE NOTE THAT COLORS MAY VARY DUE TO PRINTING PROCESS



NEW COLORS



OPTIONS, ACCESSORIES AND EXTRAS

OPTIONS	20' LONG	24' LONG	28' LONG	32' LONG	36' LONG	40' LONG	44' LONG	48' LONG	52' LONG
12GA UPGRADE	\$700	\$800	\$900	\$1000	\$1100	\$1200	\$1300	\$1400	\$1500
CONNECTION FEE PER LEAN TO	\$300	\$325	\$350	\$375	\$400	\$425	\$450	\$475	\$500
DELUXE TWO TONE	\$600	\$700	\$800	\$900	\$1000	\$1100	\$1200	\$1300	\$1400

SIDE HEIGHT	20' LONG	24' LONG	28' LONG	32' LONG	36' LONG	40' LONG	44' LONG	48' LONG	52' LONG
10' Tall	\$360	\$432	\$504	\$576	\$648	\$720	\$792	\$864	\$936
12' Tall	\$720	\$864	\$1008	\$1152	\$1296	\$1440	\$1584	\$1728	\$1872
14' Tall	\$1280	\$1536	\$1792	\$2048	\$2304	\$2560	\$2816	\$3072	\$3328
16' Tall	\$2040	\$2412	\$2784	\$3156	\$3528	\$3900	\$4272	\$4644	\$5016
18' Tall	\$2800	\$3200	\$3600	\$4000	\$4400	\$4800	\$5200	\$5600	\$6000
20' Tall	\$3160	\$3726	\$4292	\$4858	\$5424	\$5990	\$6556	\$7122	\$7688

BOTH SIDES CLOSED	20' LONG	24' LONG	28' LONG	32' LONG	36' LONG	40' LONG	44' LONG	48' LONG	52' LONG
8' Tall	\$860	\$1030	\$1200	\$1370	\$1540	\$1710	\$1880	\$2050	\$2220
10' Tall	\$980	\$1170	\$1360	\$1560	\$1750	\$1960	\$2150	\$2340	\$2530
12' Tall	\$1100	\$1320	\$1540	\$1760	\$1980	\$2200	\$2420	\$2640	\$2860
14' Tall	\$1220	\$1464	\$1708	\$1952	\$2196	\$2440	\$2684	\$2928	\$3172
16' Tall	\$1700	\$2040	\$2380	\$2720	\$3060	\$3400	\$3740	\$4080	\$4420
18' Tall	\$2060	\$2474	\$2884	\$3296	\$3708	\$4120	\$4532	\$4944	\$5356
20' Tall	\$2420	\$2904	\$3388	\$3872	\$4356	\$4840	\$5324	\$5808	\$6292

EACH END CLOSED	8' TALL	10' TALL	12' TALL	14' TALL	16' TALL	18' TALL	20' TALL
32' Wide	\$2295	\$2445	\$2595	\$2745	\$2895	\$3045	\$3195
34' Wide	\$2395	\$2545	\$2695	\$2845	\$2995	\$3145	\$3295
36' Wide	\$2495	\$2645	\$2795	\$2945	\$3095	\$3245	\$3395
38' Wide	\$2595	\$2745	\$2895	\$3045	\$3195	\$3345	\$3495
40' Wide	\$2695	\$2845	\$2995	\$3145	\$3295	\$3445	\$3595
42' Wide	\$2795	\$2945	\$3095	\$3245	\$3395	\$3545	\$3695
44' Wide	\$2895	\$3045	\$3195	\$3345	\$3495	\$3645	\$3795
46' Wide	\$2995	\$3145	\$3295	\$3445	\$3595	\$3745	\$3895
48' Wide	\$3095	\$3245	\$3395	\$3545	\$3695	\$3845	\$3995
50' Wide	\$3195	\$3345	\$3495	\$3645	\$3795	\$3945	\$4095
52' Wide	\$3295	\$3445	\$3595	\$3745	\$3895	\$4045	\$4195
54' Wide	\$3395	\$3545	\$3695	\$3845	\$3995	\$4145	\$4295
56' Wide	\$3495	\$3645	\$3795	\$3945	\$4095	\$4245	\$4395
58' Wide	\$3595	\$3745	\$3895	\$4045	\$4195	\$4345	\$4495
60' Wide	\$3695	\$3845	\$3995	\$4145	\$4295	\$4445	\$4595

Certified Garage Doors (White Only)

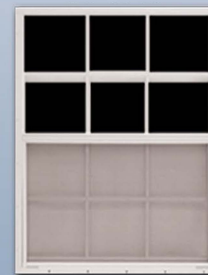
6' X 6'	\$650	10' X 10'	\$950
8' X 8'	\$700	*12' X 12'	\$1800
9' X 8'	\$750	*14' X 14'	\$2400
10' X 8'	\$850	*16' X 16'	\$2600

Chain Hoist \$275.00 Each (*Included In Price)

Building must be 2' taller than garage door when installed on the side for certified garage doors.

Windows

\$200.00
30" X 36"



Insulation

Double Bubble \$1.00/sq ft
Woven R-17 \$2.00/sq ft

Walk In Doors

36" X 80" \$225.00

Gable End

32' to 40' Wide \$500.00
42' to 50' Wide \$600.00
52' to 60' Wide \$750.00

Frameouts

45° Angle \$80.00
(Plus Frameout Charge)
Garage Door \$125.00

Window \$70.00
Walk-In Door \$85.00

Side Openings

With Garage Door
\$225.00

Without Garage Door
\$325.00

Blueprint

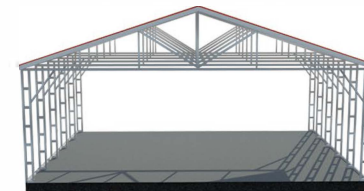
Call For Pricing

Side View



Up to Any Length

Front View



32' to 60' Wide